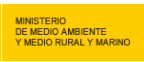


HISPAVEG: A NEW ONLINE VEGETATION PLOT DATABASE FOR SPAIN

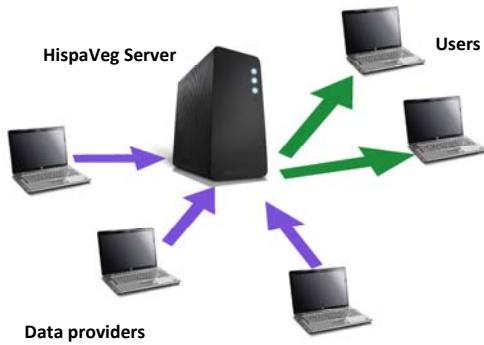


A. Gastón¹, C. Ropero¹, J.I. García-Viñas¹, C. López-Leiva¹, V. Gómez-Sanz¹, R. Vallejo², J. Ruiz del Castillo¹, J. Ruiz de la Torre³

¹ Technical University of Madrid, ECOGESFOR research group, Madrid, Spain; ² Technical University of Madrid, ETSI Montes, Madrid, Spain; ³ Nature Databank, Ministry of Environment, Madrid, Spain;

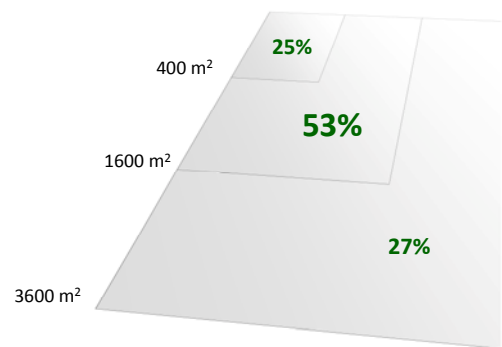
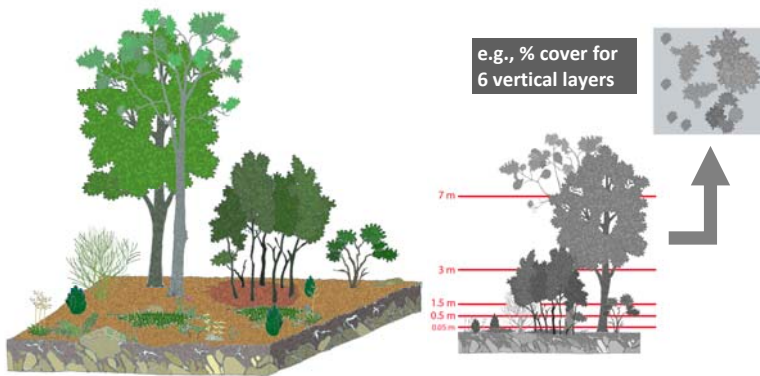
HispaVeg: an online database

Currently holds data of 2663 vegetation plots, covering most of the Spanish woodland, scrubland and grassland types



Unlike other similar databases, a detailed description of the structure is stored with the floristic data of each plot

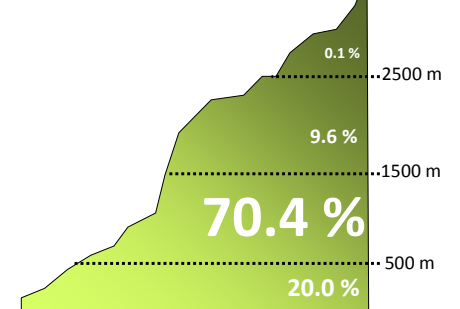
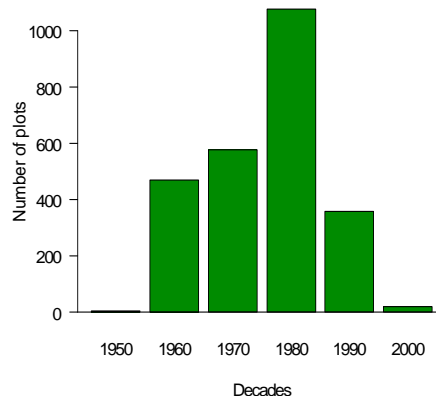
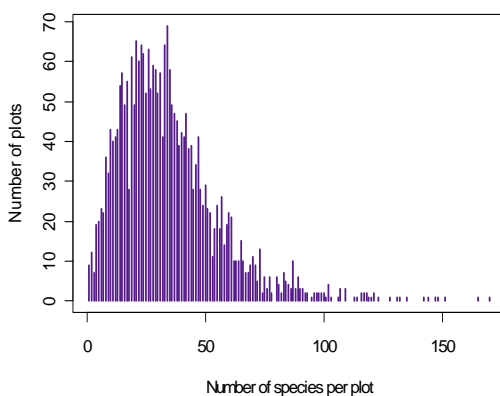
Most plots are large rectangles (400 m² or more)



Mean species number = 34

Survey dates from 1956 to present

Elevation from 0 to 2880 m



HispaVeg is freely available to the scientific community

Users can query the online database, view printable reports for each plot and download spreadsheet-like raw data for subsets of vegetation plots

<http://www.hispaveg.org>

Query form

A screenshot of the online query form. It includes input fields for 'Provincia' (Province), 'Municipio' (Municipality), 'UTM X (km)', 'UTM Y (km)', 'Cota mín.' (Minimum elevation), 'Cota máx.' (Maximum elevation), and 'Litosolios' (Lithology). There is a 'Buscar' (Search) button at the bottom.

Printable report



Download raw data



54th Symposium of the International Association for Vegetation Science
IAVS 2011 Lyon, France, 20 - 24 June 2011